

**SUNDERLAND & SOUTH TYNESIDE
CAMPAIGN FOR REAL ALE
CAMRA ANGLE - ISSUE 61 -
AUTUMN 2022**

**Sunderland Beer
& Cider Winter
Festival 2022**

FREE ENTRY

The Peacock

**287 High St. West Sunderland
SR1 3ES**

November 10th, 11th & 12th

Thurs 4 - 10pm

Fri & Sat 12 noon - 10pm

**20 BEERS
& CIDERS**

**AWARDS &
PUB CRAWL
ISSUE**

Live Music Sessions

sundfest.camra.org.uk

FREE PLEASE TAKE ONE



**Campaign
for
Real Ale**

THE STEAMBOAT



A Friendly Welcome Guaranteed!

CAMRA 50TH ANNIVERSARY

GOLD AWARD 2021

CAMRA'S Sunderland & South Tyneside

**Pub of the Year 2008, 2009, 2010, 2011, 2015,
2016, 2017, 2018 Runner Up 2022**

Community Pub 2022

Regional Pub of the Year 2015 & 2016

Nine ever changing Cask Ales and Ciders

30 Whiskies, 90 Rums & 30 Gins

27 Mill Dam South Shields

NE33 1EQ Tel: 0191 4540134



Welcome to this edition of CAMRA Angle.

As Angle 61 goes to print I'm celebrating my first anniversary as your local branch chair.

A year ago we'd just emerged from a long & strange experience none of us expected nor enjoyed! Things were a bit flat, for CAMRA, the pub industry, brewers, everyone! New "challenges" have also emerged this year & nothing is getting easier! However I feel Sunderland & South Tyneside CAMRA have taken a step forward, I hope you agree?

Our events spreadsheet has 70+ rows for 2022, each one represents a meeting, presentation, event or social at branch or regional level. The branch team has been so busy & the list of other people involved is too long to mention individually...So my thanks go to all of you who got involved...You know who you are. Best of all we've campaigned hard for CAMRA this last 12 month but we've had fun doing it!

It won't have escaped your notice on the front cover the **Sunderland Beer Festival** has returned. Visitors and volunteers are welcome. Check out the website : - **sundfest.camra.org.uk** for more information.

The desire for members to get out and about is reflected in the fact there are **five pub crawl articles**...probably a first for CAMRA Angle.

The middle pages give recognition to our winners; namely Regional Club of The Year (**Mid Boldon Club**), Regional Cider Pub of the Year (**Blues Micro Pub**). Not forgetting **The Steamboat** for a CAMRA Community Award and the triumphant winners of our first branch quiz, held in the **Ivy House**.

Enjoy the read.

Ian Monteith Preston

CAMRA ANGLE is produced in house and published by the Sunderland & South Tyneside Branch of CAMRA © 2022 . Views or comments expressed in this publication may not be necessarily those of the Editor, contributors or CAMRA. 2500 copies are distributed across the branch and beyond .

CONTRIBUTIONS are welcome and can be sent to :- **magazine01@sst.camra.org.uk**

ADVERTISING IN CAMRA ANGLE We have been busy acquiring advertisers for this magazine. Without them we would not be able to present a printed CAMRA Angle for your enjoyment and information. Please support them.

Our competitive rates are :-

£100 per full page,

£55 for a half page

£35 for a quarter page.

A free design service is available. Please contact ads01@sst.camra.org.uk



SERVING
TRADITIONAL PUB FOOD

MONDAY - SATURDAY 11AM - 8.45PM • SUNDAY 12 NOON - 5PM

LOCAL CASK ALES
LAGERS & CIDERS
VAST SPIRIT SELECTION

FUNCTION ROOM AVAILABLE • DOG FRIENDLY
POOL TABLE • DARTS • PUB GAMES
5 MINUTES WALK FROM THE BEACH



THE MARINE
230 OCEAN ROAD, SOUTH SHIELDS
TYNE & WEAR, NE33 2JQ
0191 455 0280
CIVILIZEDPOISON@GMAIL.COM

 THE MARINE  THEMARINE33

 THE MARINE



North Sea

OPENING HOURS

MONDAY - THURSDAY 11AM-11PM • FRIDAY - SATURDAY 11AM-MIDNIGHT
SUNDAY 12 NOON-10.30PM

BREWERY NEWS

Darwin Brewery & Brewlab - Michael Wynne

Keith Thomas, owner of Brewlab and Darwin is looking to retire, and although he is still involved in teaching, he has sold **Brewlab** to his long-time assistant.

Darwin has been sold to Ewen McCann of Three Kings Brewery and it has moved to the North Shields premises. They will operate independently using separate kit and Gav Sutherland remains in charge of Darwin.

Beer-wise they've got a couple of one-offs available this month, a pale ale called Concrete Boat, 4.5% hopped with Hallertau Blanc and Centennial and Mangooooo IPA 5.5% featuring El Dorado and Mandarin Bavaria hops and Mango.

Brewlab Open Night

On Wednesday 31 August, the first Brewlab open night was held at the West Quay Court site to mark the end of the latest brewing course. Two student beers



were on offer. Both were golden ales brewed with different hops

Maxim Brewery - Ken Paul

Their October seasonal is Sorachi. This is an extra pale ale with blends of lager, Munich and pale malts with Equinox, Cascade and Sorachi hops added.

Olicana appeared nationwide in the Wetherspoons Autumn Octoberfest then American Pride and Raspberry Porter will be back in bottles & cask. Then November Pekko Pale Ale 4.3% (a new one) and **John Bull**



Stout. Xmas beers again will be Great Escape, Santastic & Santa's Soot.

Apart from that just price rises still coming from all angles, such as energy and raw materials, putting more pressure on the business.

Vaux Brewery & Taproom - Mo Moseley

There is now a pizza place immediately outside their

taproom. It's open whenever the taproom is, i.e., Friday and Saturday, and has a choice of four different types of pizza. The ever present is margarita and pepperoni, both of which I've tried and can recommend, and the other two change from day-to-day. The pizzas come from Slice, who are based in Seaham, and can be bought with card or cash. (Vaux are card only.)

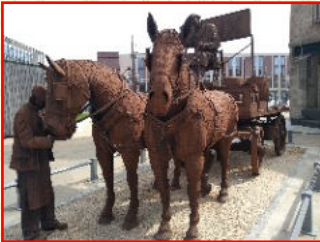
Vaux had an 11% Imperial stout called **Stormy Petrel** ready for their Munich style weekend (see below) ; and I thought last year's 1899 stout was strong at 7%. It's not yet been decided whether this imperial stout will be available in bottles or on draught. If you've never had a true imperial stout, it's a most peculiar beer, as strong as wine, still recognisable as a stout but also tasting like red wine and beef tea. Don't drink it in pints unless you want to wake up in a police cell.

On the weekend of Friday and Saturday the 23rd and 24th of September the taproom held a Munich-styled weekend which was very good. German sausage and sauerkraut on pizza worked very well and a 6.3% lager from Hofbrau in Munich was the tastiest lager I've ever had. Vaux's aforesaid Stormy Petrel was on draught and I highly recommend that too.

PUB and more BREWERY NEWS

To keep up-to-date with each month's pub/brewery news download our latest CAMRA Angle Online from <https://sst.camra.org.uk/wordpress/?tag=newsletter> "

The Peacock in Sunderland hosted a Vaux Collectibles evening on September 9th in honour of sculpture Ray Lonsdale, who's Gan Canny can be found in Keel Square



close to the pub.

As you may have seen from the front cover, The Peacock is hosting our Sunderland Beer Festival.



Above is an image of part of the first floor room we will be using

The Steamboat will be holding their Beer & Cider Festival from Thurs 27th to Sunday 30th October

The Biddick Inn, Washington closed briefly in the summer after the retirement of the long time landlord. The pub has been completely refurbished and I'm told that cask ale will be back on by the time you read this.

Also in Washington, **The Steps** has introduced a buy five pints, get one free loyalty card.

Former Sunderland real ale pub **The Broadway** has closed. Formerly known as the Wavendon, this Stirks Steakhouse was located just off Chester Road

The Copt Hill, Houghton - le Spring is now a Tavistock pub/restaurant and will be re - opening soon. Their statement to the press included mention of premium cask ale.

The Waterfront, sandwiched between The Steamboat and The Riverview in South Shields, is set to open. Renamed **The Mill Dam**, it will be a cocktail and music lounge.

The Rosedene in Ashbrooke Sunderland has had a major refit and reopened as a Flaming Grill pub.

In July 2022 **One More Than Two Brew** in South Shields closed its door for good. This affected the brewery and the taproom.

However the head brewer plans to open a new micro brewery behind the **Queen**



Vic pub in Roker, Sunderland .To be called Block Brewery, we await further news.

Just around the corner is the **Roker Hotel and Poetic License**. Owned by Tavistock Hospitality, they are up for sale. According to the *Evening Chronicle* the Poetic License part of the business, which includes a gin distillery, will be moved elsewhere.

Thanks to **The Lambton Arms** , South Shields, and **Chesters** , Sunderland for hosting our last two branch meetings and **Mid Boldon Club** for hosting Sunderland Beer Festival committee meetings.

The Branch **Annual General Meeting** will be held on Wednesday November 23rd at 7.30pm in **The Marine**, 230 Ocean Road, South Shields NE33 2JQ (upstairs)

THE GIN & ALE HOUSE



We are a traditional pub about 5 minutes from Jarrow Town Centre.

Four changing real ales
WEDNESD-ALE all cask
£3 a pint.

Also a Daily Special cask available.



We have a Quiz every Sunday and Thursday is Buskers Night from 7.30pm.

We are in
The Good Beer Guide

Opening Times

Walter Street, Jarrow,
NE32 3PQ

Tel : - (0191) 489 7222

2.30-10.30pm Monday & Tuesday
2.30-11pm Wednesday & Thursday
Noon-11pm Friday & Saturday
Noon-1pm Sunday

DIARY DATES

OCTOBER	
NORTH OF TYNE WANDER	Saturday October 29th Meet Steamboat , Mill Dam South Shields at 12.30pm
NOVEMBER	
CHAMPION BEER OF BRITAIN VOTE	Deadline for members to vote is November 1st 2022.
MAXIM OPEN NIGHT	Friday 4th November from 5pm. Maxim Brewery, Gladwell Road, Rainton Bridge DH4 5NL
SUNDERLAND BEER & CIDER FESTIVAL	Thursday 10th - Saturday 12th November - for times see front cover
AGM / BRANCH MEETING	Wednesday 23rd November 7.30pm. The Marine, South Shields
DECEMBER	
MAXIM OPEN NIGHT	Friday 2nd December from 5pm.
NORTH EAST REGIONAL MTG	TBC
CHRISTMAS CURRY NIGHTS	TBC

GOING POTY AFTER A LONG BREAK by Terry Ford

After a two year break (for some unknown reason!) Pub of The Year Judging was back on the road.

This is where Sunderland & South Tyneside CAMRA members get to see and judge the cream of the other North East pubs and clubs. We can't judge pubs in our own branch, so a group of us set off in a minibus one Saturday in July to visit other branches ; Darlington, Durham and Tyneside & Northumberland.



The first two were in Darlington. Their Pub of the Year is the multi award winner **The Quakerhouse**, (above). The building dates from the late 1700's and can be found in a what's called a Yard off the town centre.

On sale was Causeway, Tour de Beer, Wobble Damper, Yorvik Blonde, Plum Porter and the oddly named Puss 'N' Boobs! The latter is brewed underneath the pub trading as the Mad Scientist micro brewery



Next was a short drive to the **Darlington Snooker Club**, the branch Club of The Year (above) . The walls were absolutely plastered! (with beer mats!). The beers included Ossett Sabro, Heritage and Skarb which was described as a Ukrainian golden ale of 6%, well I had to drink to that cause!

A couple of the lads managed to get a game of snooker before we were off on our drive north to the city of Durham and **The Station House**. (Below)



This is the Durham City Pub of the Year * and had four real ales, including Two by Two, Ossett Butterly and Pennine Pale - a 4% pale ale with Cascade and Citra hops this was a really nice pint. This pub seems to be half micro pub

and half traditional pub but is always an excellent venue.



We headed north again to **The Masonic Centre** in Chester-le-Street. This was the first time I had been in this club and I was very impressed. The Durham Branch Club of the Year, they had three hand pulls in operation: Cowen from Firebrick at 3.8%, Cenobio a milky coffee stout at 5% from Darwin Brewery, and Takara by Durham Brewery a pale ale at 3.9%. The Cowen and Cenobio were excellent. There was a pleasant outdoor area to sup the beer.



Our fifth pub was a half hour drive away. **The Grey Horse** at Consett is the Durham country pub of the year. They had 10 beers on

Continued



OPENING TIMES:
TUESDAY - THURSDAY: 4PM - 10.30PM
FRIDAY: 2PM - 11PM
SATURDAY: 12PM - 11PM
SUNDAY: 4PM - 10.30PM

THE STATION HOUSE,
NORTH ROAD, DURHAM, DH1 4SE

CASK BEER / REAL CIDER / CRAFT KEG

2022

- REGIONAL PUB OF THE YEAR
- CITY PUB OF THE YEAR
- CIDER PUB OF THE YEAR



TRAIN BEER FRIDGE

REFURBISHED
SNUG:
NOW WITH
SQUISHY
SEATS!

OPENING TIMES:
TUESDAY - THURSDAY: 3PM - 10.30PM
FRIDAY - SATURDAY: 11.30AM - 10.30PM
SUNDAY: 2PM - 9PM

29B FRONT STREET,
FRAMWELLGATE MOOR,
DH1 5EE

CASK BEER / REAL CIDER / CRAFT KEG

EXTENSIVE RANGE OF BEER, FINE CIDER,
AND WINE FOR TAKE AWAY

OCC COFFEE AVAILABLE ALL DAY

the board, four of them from their own brewery Consett Ale Works which is located behind the pub.

I opted for the Red Dust at 4.5%, named after the clouds of iron oxide which used to cover Consett. This pub has tons of atmosphere and you can almost imagine what it was like 150 years ago crammed with thirsty workers.

The penultimate venue was a micropub - **The Office** in Morpeth. This is the Northumberland Pub of the Year and has moved from just north of the river that flows through the town, The Wansbeck, to the south just over the river.

This cosy little micropub - above- had six hand pulls



on. I had the 3.8% Shuggy Boat Blonde from Cullercoats Brewery, one of my favourites.

Last off was **The County** (right) on Gosforth High Street a very large Greene King pub with a reasonable selection of real ales; though I noticed most people were drinking lager. I had the Timothy Taylor's

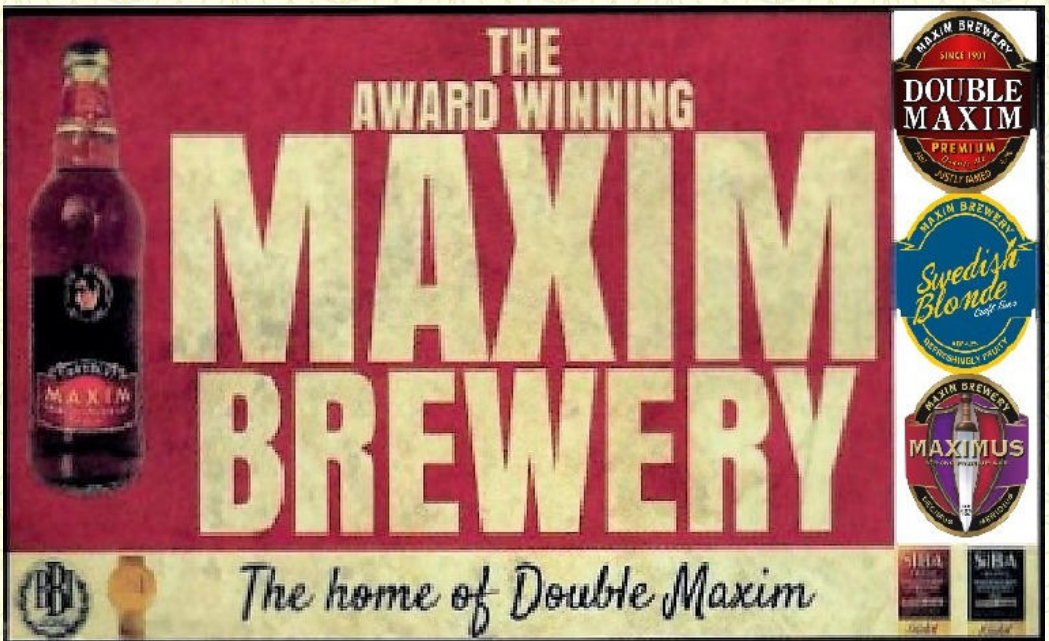
Landlord one of my usual standard drinks.

My favourite pub of the day was the Grey Horse with the Masonic Centre the best club. . As all these pubs are local CAMRA winners ; they were all cracking boozers!heers



Terry Ford

* Editors Note - The eventual Regional Pub of the Year winner was **The Station House**



THE
AWARD WINNING
MAXIM
BREWERY

The home of Double Maxim

MAXIM BREWERY SINCE 1901
DOUBLE MAXIM
PREMIUM CRAFT BEER
JUSTLY NAMED

MAXIM BREWERY
Swedish Blonde
CRAFT BEER
REFRESHING TASTE

MAXIM BREWERY
MAXIMUS
CRAFT BEER
LEGENDARY HOPPED

MAXIM BREWERY
MAXIMUS
CRAFT BEER

WHICKHAM AND THE WEST

A group of us over the years have had pub crawls all over the region and beyond. One area not covered before is Western Gateshead, namely Whickham, Swalwell and Ryton. The latter is home to **Ye Olde Cross Community** pub, a must visit. There are a couple of micro pubs as well.

So six of us set off one Friday morning in August. Five met up at Gateshead Interchange to catch the 97 bus to Whickham, while number six planned to join us from from another direction.



First was breakfast in **The Harry Clasper**, This imposing pub was converted from the former Whickham Council Offices in 2014 and named after Victorian Tyneside rower Harry Clasper, who is buried nearby. It had a pleasant interior with a nice outdoor drinking area. As luck would have it they had **Maximus** on - strong, but dangerously drinkable.

Number six was late (bus problems) so we decided on breakfast without him. He arrived, slightly peeved

after we had finished. So he opted for the all day brunch, which doesn't start till 11.30. Work that one out. While he was tucking into that we had no choice but to have a second pint of **Maximus** for those enjoying the strong stuff.

Feeding time over we finally set off for a 10 minute walk to our second pub, **The One Eyed Stag**.



This single room micro pub is set back from Whickham Front Street in a small square and next to a funeral parlour. It has been in the Good Beer Guide since 2019 and four handpulls were available ; I had **Best Mate** from Northumberland brewery Metalhead, a new beer for me.



When questioned, the barman (not the current owner) didn't know where the pub got it's name from.

Luckily the only two occupants, a couple of ladies sitting near the bar, looked like they knew, and they did! The original owner wanted the name be unique in the UK. According to Whatpub, it still is.

Outside were a couple of tables, just fine for an a lunchtime sit in the sun. Time now to head to our furthest westerly point, Ryton. This meant catching the no 69 opposite the pub to Blaydon, with a quick change to the Tyne Valley bus to Ryton. The road through the village was quite busy but it wouldn't be where we were going, down the hill to Old Ryton Village.



The pub (above), the aforementioned **Ye Olde Cross**, was in a tranquil setting on the village green next to the cross that gives its name to the pub.

A world away from the busy main road, this former Enterprise pub closed in 2018 and was reopened in just 18 months, now owned by the community.

Continued

There was a single bar area with a side room tucked away (which we obligingly occupied)

There were five real ales including Jarl and **Consett Porter**. The latter got my vote and we had an enjoyable hour in this wonderful local. Another well deserved entry in the current Good Beer Guide.

On the 10 minute walk down to old village I spotted a bus stop near the pub, which was served by a Nexus mini bus, so we caught the last one back to Blaydon. The route took us through some small villages and estates, I know not where, but we were kept entertained by the bus radio.

After a short wait at the bus station we boarded a no 49 to Swalwell, a ten minute ride.



There are two pubs close to each other in Swalwell; **The Sun Inn** and **Owa The Road**, (pictured above) . The intention was to go to both of these Good Beer Guide entries. .

A guy on the bus said the same licensee ran both pubs and to say hello to Linda in the second one. We looked briefly in the former, The Sun Inn. I had visited before but this time there was loud music and no spare seats for the six of us so we walked Owa The Road.

Located in a former Coop building, this micro pub by contrast to the Sun Inn, was quiet but with enough seats in its "back room" for us all to take over. I asked if Linda was around, but the barman looked at me suspiciously and replied "No but I'm her husband!"

There were four handpulls however and I had a nice pint of **Firebrick Coalface**. You couldn't get more Locale than this, being brewed in Blaydon one and a half miles away.

By now it was after 7pm. and we were getting hungry. We could see in the distance a chippy , the website of which said it was also a sit in cafe. Wrong.

The proprietor suggested a couple of options but they were not the way we were going, so we decided to head back to Gateshead Interchange where we sought out **The Tilley Stone** for a quick bite to eat

The pub is named after two local coal mine seams and

they had on a wonderful pint of Daleside Monkey Wrench to finish the day to wash down my fish and chips.

Despite it being early Friday evening it was quiet enough with no problems getting served. In fact, in all pubs the service and the beers were all spot on.

Apart from a couple of bus no shows at the start of the day, the bus services served us well and were generally on time.

Details of all pubs can be found on Whatpub. There is also a CAMRA website about community pubs

<https://communitypubs.camra.org.uk>

Getting there :- For Whickham and Swalwell catch the Metro to Gateshead then the 97 for Whickham or the 49 to Swalwell. For Ryton take the Metro to Newcastle Central and catch the 10/10A/10B Tyne Valley service then walk down to the village.

Ken Paul



BLUE'S MICRO PUB

1A PERCY TERRACE, WHITBURN, SUNDERLAND.

- Multi-Award Winning Micro Pub and Bottle Shop in Whitburn.
- Real Ale, Cider and Wine.
- South Tyneside Cider Pub of the Year 2022
- North East Regional Cider Pub of the Year 2022
- Up to Five Real Ales
- Up to Six Real Ciders
- Cask Club every Wednesday - 10% off Cask Beer
- Free Cheese Boards every Sunday and Cask Club until 4pm
- Pie & Pint every Thursday - £5.50 for a pint of Cask and a Pie
- Whisky Club - First Monday of each Month



1a Percy Terrace, Whitburn, Sunderland, SR6 7EW

Opening Times:

Monday: 4pm - 10pm
Tuesday: 4pm - 10pm
Wednesday: 4pm - 10pm
Thursday: 4pm - 10pm
Friday: 1:30pm - 10:30pm
Saturday: 12:30pm - 10:30pm
Sunday: 12:30pm - 8pm



AWARDS PAGE ONE

The branch launched a **CAMRA Community Pub** in 2022. to recognise pubs (including clubs and taprooms) supporting their community. Our first nomination was from Robin Sanderson for **The Steamboat** in South Shields for :-

"Free use of room for a number of musical events and for fundraising events for a number of charities".

Cancer Connections were presented with a £2000 cheque in June 2022 and Steamboat licensee Kath Brain was presented with a CAMRA Special Award in August by Branch



DIGI HIPPIY MEDIA . Included above are members of the Steamboat Collective, regulars and CAMRA Members



This article first appeared in What's Brewing on 13th September 2022

The Branch Cider Pub of the Year 2022 is Blues Micro Pub in Whitburn. In competition with other pubs in the North East Region, Blues was awarded **North East Regional Cider Pub of the Year** recently.

Congratulations to Alice Pye and Callum Watson, who are seen below being presented with their award by North East Regional Cider Coordinator, Bill Wilkinson.



AWARDS PAGE TWO

For many years **The Mid Boldon Club** in East Boldon has been the **Sunderland & South Tyneside Branch Club of the Year**. In 2022 they decided to be put forward to the next judging round ; **The North East Regional Club of the Year**, which they duly won !

On Thursday October 13th 2022 Club director Steve Drummond was presented with their award by North East Regional Director Hubert Gieschen.



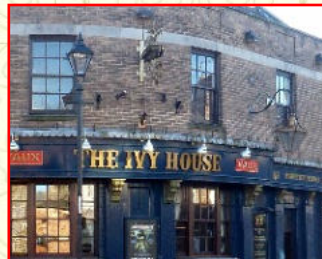
On Thursday 6th October 2022 the branch held their first pub quiz, a fundraiser for the **Sunderland Samaritans**.

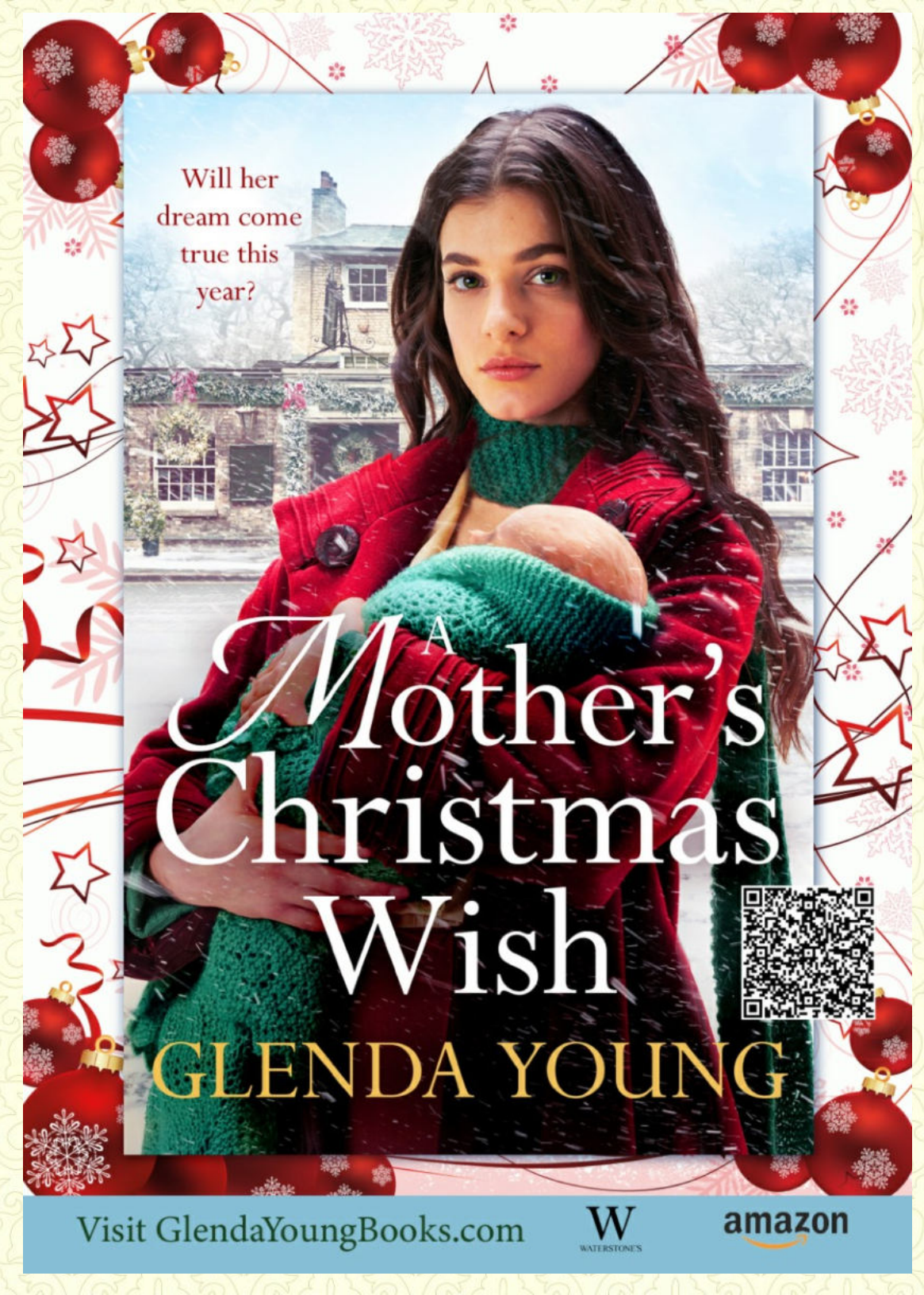
Fiona Monteith Preston set the questions and hosted the event in the Ivy House Sunderland. 13 teams took part, comprising CAMRA members from our branch and Durham, members of the charity and pub locals who joined in.

£179 was raised for which the charity were delighted

Prizes were donated , included eight bottles of Maxim Brewery Double Maxim for the eventual winner, "How's Your Head", presented by branch chair Ian Monteith Preston.

Thanks to all those who donated and to the Ivy House for their support and their excellent range of ales and cider.





Will her
dream come
true this
year?

Mother's Christmas Wish

GLENDAYOUNG



Visit GlendaYoungBooks.com

W
WATERSTONES

amazon

TOUGH TIMES, STRONG WOMEN - by Glenda Young

You might be wondering why there's a full page ad opposite advertising a Christmas book. And you might think it appears to have nothing to do with real ale, or northeast pubs. Ah, but you'd be wrong.

My best selling novels are set at the end of WW1 in the ex-coalmining and farming village of Ryhope, south of Sunderland. Ryhope is where I was born and bred, where I grew up and where I still visit family and friends. Anyone who has ever visited Ryhope will have noticed that there's one heck of a lot of pubs! Well, coalmining and farming was very thirsty work.

Researching old pubs of Ryhope, I'm indebted to a reference book called "A *Historic Look at the pubs of Ryhope and Silksworth*". It's written by **Ron Lawson** and printed by Sunderland Antiquarian Society in 2015. Ron gives a list of all of the breweries for each pub along with the license holders. From the names on these lists, it's clear that many pubs in the post-WW1 era I write about were run by women.

These pub landladies were not shrinking violets. They had to be strong enough to tackle drunken miners and farmers, and to throw them out when fighting broke out in their pubs.

It's these women who make their way into my new

novel, *A Mother's Christmas Wish*. It's set in The Foresters Arms in Ryhope and stars wayward heroine Emma who is sent from Ireland to Ryhope to live with her aunt Bessie and help her run her pub. The relationship between Emma and Bessie is unique and they form a tight bond. It makes what happens in the story all the more poignant and moving.

Added to the mix are the heightened emotions of Christmas with a dash of festive romance and love – and of course, plenty of beer!

Glenda Young
Writer of Historical Novels set in Ryhope, 1919

<http://glendayoungbooks>.

Branch pubs and clubs that offer either a discount scheme, loyalty card or accept CAMRA 50p vouchers. If you have any updates please email the branch Pubs Officer [sst.pubsOfficer@gmail.com](mailto:ssst.pubsOfficer@gmail.com)

East Boldon	South Shields	Sunderland Centre
Grey House - 50p off voucher	Wouldhave - 50p off voucher	Dun Cow - 10 % off
East Herrington	Sunderland North	Fitzgeralds - loyalty card
Board Inn - 50p off voucher	Avenue - 10% discount	Ivy House - 10% discount
Houghton le Spring	Blue Bell - 50p off voucher	Peacock - 10% discount
Wild Boar - 50p off voucher	Harbour View 10% off Mon-Fri before 7pm.	Ship Isis - 10% discount
South Shields	New Derby - on Friday, buy a pint , get a half of another pint free	William Jameson - 50p off voucher
Fountain - 10% discount	Sunderland Centre	Washington
Lambton Arms - 10% discount	Chaplins - 10% disc & loyalty card	Sir William de Wessyngton - 50p off Voucher
Maltings - 10% discount	Chesters - 50p off voucher & loyalty card	Steps - Loyalty Card
Marine - Loyalty Card	Cooper Rose - 50p off voucher	Washington Arms - 50p off voucher



THE IVY HOUSE

PASSIONATE ABOUT CASK ALE
6 x CONSTANTLY CHANGING
HANDPULLS FROM RENOWNED
LOCAL & NATIONAL BREWERS

10% DISCOUNT ON ALL
CASK FOR CAMRA
MEMBERS

100% HOMEMADE FOOD SERVED DAILY

THE IVY HOUSE
WORCESTER TERRACE, SUNDERLAND
SR2 7AW

0191 567 33 99

(NEAR PARK LANE INTERCHANGE)

CHECK OUR FACEBOOK PAGE FOR REGULAR CASK UPDATES



SOUTH SHIELDS TOWN CENTRE TO MARKET PLACE

by The Wandering Bear

A look back to June 2021. Covid restrictions were still in place as I ventured to sunny South Shields one Sunday afternoon, but things were looking brighter as the vaccination rollout gathered pace. As my wife took my two boys to soft play and the arcades, I made my way to my first port of call; **The Stags Head.**



A Black Sheep pump was on the bar, however there was none in the barrel and three other handpulls

lay empty so I had to make do with a pint of Stones for £3.10 and I sat myself in the front window. This pub has a special place in my heart, as I attended my first Camra meeting here a few years ago having been to the Sunderland Octoberfest in the weeks preceding.

This meeting was held in the upstairs Function Room, which is still available for hire. The downstairs is small and is dominated by the bar with seating along the outside walls and a small area towards the back of the room where you will find the amenities.

There is a lovely open fire,

with a Stags Head attached to the wall above it. The place had a lovely old fashioned feel, full of character and history with thick curtains at the window giving it a warm, homely feel. As customers walked in, the very friendly barman (and probable Licensee) was already getting their drink ready; great service and just what you want from your local.

Stickers on the window advertise the fact that The Stags Head is listed in a couple of Camra books; Heritage Pubs and GBG. A small TV was high up on the wall, playing some decent music at an appropriate volume and I was particularly taken by the beautiful lighting above the bar.

A quick check online tells me that the pub dates from 1897, further details about its Heritage status can also be found online.

Across the road towards the new bus and Metro interchange was **Annie McCarthy's**, sadly now closed. I visited several years ago and had a nice pint or two and I remember there were quite a few characters inside enjoying their free time. I think it is up for sale now and I fear for its future as a pub.

A very short walk down Fowler Street in the Town Centre took me to **The**

Criterion. Now an upstairs only establishment, those older folk amongst us will remember it as having the



whole corner building (the downstairs now being a bookies).

The Cri as it is known has been very smartly decorated, and it was busy during my visit mainly with families and couples enjoying afternoon tea (presumably for Father's Day). As I hadn't booked, I sat in the corner and ordered a pint of GNEB Taheke Sun for £3.20. GNEB's 'One Night in Turin' was also on draught. Yay, real ale for a change!

I have to point out though, actually getting into the pub could cause issues as I found it quite difficult to negotiate due to the number of doors, stairs and the split level flooring and I have been here before. Anyway, safely sat down I looked around and took in the atmosphere.

Sadly, the staff were still masked up and it was table service only meaning they were very busy, but very

Continued

friendly and very efficient.

A small TV adorned one wall, but it was switched off and some nice music was played at an appropriate level, mostly drowned out by the chit chat of the patrons. Two real fireplaces were built into the walls, and one was actually on. I do enjoy a roaring fire, there is something very relaxing about watching the flames go about their business.

The flooring was part carpet, part wood and there was wood panelling on the walls. Old barrels were used as tables and the whole thing came together in a lovely way to give a very comfy ambience. I could have stayed longer if I didn't have more pubs to visit. One more point to note, complimentary cheeseboards were available Sunday's 6-8pm while stocks last... great stuff!

A few yards across the main square took me to the **Ship and Royal**. This large pub occupies a prime location on the corner and as the weather was fine, there were a few people sitting outside at the tables enjoying the hustle and bustle.

As I don't mind a nice lager now and again, Czech being a particular favourite, I was happy to find Staropramen on tap which set me back £3.80. Not



bad at all really. I sat myself down at one of the large windows and was just getting to the point where the ales were helping me to relax.

The pub is large and one-roomed but has many pillars to help divide it up into smaller areas. There is a pool table, and a smaller 'snug' area at the far end of the room. The floor is a mix of carpet, tile and wood depending on where you are which again helps to divide the space so it doesn't feel too cavernous to be in. There are lots of tables to choose to sit at, and during my visit the small tv was on playing a news channel.

Everything was very much Covid-secure with table service and sanitiser everywhere. There is a large screen projector which I saw that I assume is dusted off for large events such as football etc.

A particular highlight of my visit to the Ship and Royal was hearing two old timers chatting, the conversation starting with the not often heard, 'how's your rat?'. I made the assumption that one of the guys had a pet rat, however, I couldn't stay

to hear the rest of the tale as time was running out.

So, onto my final pint, this time at **The Address** in Market Square. A pint of Caffrey's set me back a straight £2. This small, one-roomed pub has a good location on the market near the ferry landing. It was very busy (maybe the £2 a pint helped with that!) with a lovely wooden floor and smart décor on the walls.

It was 'cash only' at the bar (not sure if this is usual or whether it was Covid-related) however being an old fashioned chap that suited me fine. Several tv's were on, all on different channels and a jukebox played some music so it's fair to say there was plenty to occupy the senses. I was taken in by a fairly loud game of dominoes. I took the opportunity to update my Whatpub scores but the system was down unfortunately and a quick look at my watch showed me that it was time to leave.

And so ended a nice little wander, taking in several very different locations. I was disappointed some of the pubs were closed, I hope it is only a temporary measure.

AWAY DAY TO NORTHALLERTON by Michael Wynne

The first lads away day took place on Wednesday 10 August to celebrate a birthday. It was agreed that we would sample the delights of Northallerton, the county town of England's largest county, North Yorkshire is an hour away from Sunderland by rail. So, armed with discounted first class tickets, two of the party left Sunderland using the Grand Central train. The other three intrepid explorers left it too late to book tickets on this service and had to go via Newcastle.

On arrival, we then made the 15 minute walk into the town centre. Whatpub lists 14 pubs on Main Street, not all of them sell real ale, but there seemed to be enough to make the trip worthwhile.

We had arranged to meet the others in **The Buck Inn**, which is at the far end of the long Main Street, so we had time to stock up on pork pies from Thompson's butcher (there is a branch of Taylor's of Darlington as well) and some local cheeses from Lewis and Cooper. The Buck is a Wetherspoons in an old coaching inn with a large courtyard to the rear. It is unusual for the chain as the toilets are in the same time zone. Aside from the standard offerings, the guest ales were Elgood's

Cambridge Bitter and Rudgate Ruby Mild.

The Rudgate is one of my favourites, so we stayed for a couple before heading to our next stop. Just off Main Street, next to the Parish Church is **The Oddfellows**. This is a small traditional pub whose interior has been modernised and the three handpumps offered **Ossett White Rat, Recoil Craft White Snake and Antidote**. This is a new one for me; the barman told us they are brewed at Copper Dragon. I settled for the White Snake which was described as an IPA. Again, quality was very good.

Our next stop is on the other side of the street on Friarage Street. Now called **Origin**, this used to be the Tithe Bar (photo from



2011) and part of the excellent Market Town Taverns chain. This felt a little upmarket and more foody. There were three handpumps and I settled for Wensleydale Serious Moonlight, another session strength IPA. After ordering beer, I was asked if we weren't ordering food. This was the most expensive so

far with two pints costing £8.10. Despite this, quality again was very good. One of the new problems of midweek away days is the limited daytime opening hours of the more interesting pubs, that weren't opening till 4 4pm

So, back to The Buck Inn for more Rudgate Ruby Mild. By now the pub was quite busy and service was cumbersome, with more staff dealing with app orders than serving beer,

Once 4 o' clock came, we left for the short walk to our next stop - **The Little Tanner** used to be brewery tap for Middlesbrough based Truefitt Brewery. A walk down a short alleyway opens out into what looks like a micropub with three handpumps with only two in use, again offering the two Recoil beers. I tried the other one described as a golden ale. Again, quality was fine.

The ambience was spoilt by the presence of large TV screens playing loud music that no one seemed to be listening to. So, we made for our last call of the day.

A little further along Main Street in Garth way Arcade is **The Stumble Inn**.

Continued

This is a proper micropub in a converted shop with five handpumps offering a good range of beers from independent breweries.

I settled for **Durham 28 Years Later** at £3.80 a pint. There was a range of bottled beers and real ciders here too and the owner told us he was local CAMRA Cider Pub of the Year.

Not long after opening, the Stumble was full and we struck up conversation with some of the locals, who seemed bemused that we would come to Northallerton on a boozy day out.

All too soon, it was time to walk back to the station and head for home.

This is when disaster struck. Our Grand Central train to Sunderland was cancelled, so we joined the others on the LNER service back to Newcastle. At Newcastle, another disaster. The Metro and Northern Rail services were severely disrupted, and it seemed trains were only running between Haymarket and South Shields.

So, I ended up getting the Metro to Shields and then bus back to Sunderland. I finally arrived home three

and a half hours after leaving Northallerton.

Grand Central services have always been reliable and score highly among train operating companies and we prefer to use them and avoid using the Metro later in the evening. Monday to Saturday, the run six return journeys with five on Sunday. Their regular return fare to Northallerton is £18.30, but with Senior Railcard discount our first class tickets cost £20.

CAMRA LocAle is an initiative that promotes pubs & clubs stocking locally brewed real ale. Below is a list of those in our branch that sell beer brewed in Northumberland, Tyne & Wear and County Durham. If you have any updates please email the branch Pubs Officer, sst.pubsofficer@gmail.com.

Cleadon	South Shields	Sunderland North
Stables	Stags Head	Blue Bell
East Boldon	Steamboat	Grannie Annies
Boldon Cricket Club	Wouldhave	Lighthouse
Mid Boldon Club	Sunderland Centre	Poetic License
East Rainton & Houghton	Chaplins	Seaburn Inn
Highfield Hotel	Chesters	Vaux Brewery & Taphouse
White Lion	Cooper Rose	Washington
Wild Boar	Fitzgeralds	Courtyard
Jarrow	Ivy House	Cross Keys
Gin and Ale House	Kings Arms	Sir William de Wessington
South Shields	Peacock	Steps
Cask Lounge	Ship Isis	Washington Arms
Lambton Arms	William Jameson	Whitburn
Maltings	Sunderland North	Blues Micro Pub
	Avenue	

MALTON AND STOCKTON VISIT

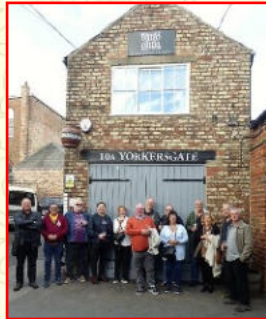
by Ian Monteith Preston

In 2022 we've increased the amount of social activity we do post COVID as well as campaigning. Actually both activities go together and help raise public awareness of CAMRA and our support for the work of both pubs and breweries.

Saturday 1st Oct therefore saw a full bus of members bound for the wonderful market town of Malton in North Yorkshire. Arriving



at 12.30pm we split up and had an hour to grab a quick pint and a bite to eat before all meeting back together at the **Brass Castle Brewery**



Tap. This Good Beer Guide (GBG) micropub sits in the town centre. Behind it is the **Brass Castle Brewery** and after tasting the taps wares we popped around the back to see the brewery itself. We then had a couple more hours in Malton to split up and explore several other town centre pubs. Personally my favourite

being another Malton GBG entry the Blue Ball.

5pm saw us meeting back together in the market square for the trip to our second destination - Stockton-on-Tees - to visit some of the excellent town centre pubs and micropubs such as the 2018 North East Regional Pub of the Year the Golden Smog. About two hours were all we had before Carl "the bus" transported us all safely back to our Washington, Sunderland and South Shields drop offs.

Keep an eye open for other branch socials, non-members are often welcome and thanks again to Carl for contributing to a brilliant day out.

CLOSURE NEWS IN BRIEF

The Coalhouse micro pub in Seaham will close at the end of October. This is due to the retirement of the owner. This leaves three real ale outlets in the town.

Further afield in Cumbria it was sad to read last month that **Jennings Brewery** is to close. Brewing of their cask ale Cumberland will be moved to Marstons in Burton on Trent .

Also in Burton is the **National Brewery Centre** (again .Marstons Coors owned) . Home to a vast collection of beer memorabilia, including an exhibit depicting the original **Britain's Oldest Registered Trade Mark**, for the **Bass Red Triangle**.

A petition has been launched to save the centre.-

<https://www.change.org/p/save-burton-s-national-brewery-centre>

Another brewery that had been set to close, **Kelham Island** in Sheffield, has been saved. A consortium including Thornbridge Brewery in Derbyshire has stepped in, which is welcome news .

Finally, **Skinner's Brewery** of Truro has gone into administration .

REAL ALE

at
wetherspoon



The Sir William
De Wessington
Washington

The Cooper Rose
Sunderland

The Wild Boar
Houghton-le-Spring

The William Jameson
Sunderland

The Wouldhave
South Shields

Ales from

£2.10
per pint

Accepted at all above locations

CAMRA
discount vouchers

Monthly Ale Events



All ales available on the
Wetherspoon app



PUB QUIZ (answers on page 27)

- 1 Which golfer is known as The Great White Shark?
- 2 The Sambadrome Stadium is in which city ?
- 3 In which TV sitcom was nurse Gladys Emmanuel?
- 4 Who had a hit with Wichita Lineman in 1969?
- 5 In which TV series is Greendale Post Office?
- 6 Who won Best Supporting Actor Oscar in 2016 for his role in Bridge of Spies?
- 7 Who had a hit in 1986 with You can call me Al?
- 8 Name the second largest state in the USA
- 9 In which country is Sapporo, the host of the 1972 Winter Olympics?
- 10 Live Long and Prosper was a phrase used in which Sci-Fi TV series?
- 11 Phnom Penh is the capital of which country?
- 12 Sarah Jessica Parker played Carrie Bradshaw in which TV series?
- 13 Name the Roman fortification that can be found between the Firth of Clyde and the Firth of Forth.
- 14 Name Roger Moore's first film as James Bond.
- 15 Name the Rossini overture based on a Swiss folk hero
- 16 How many sides does a hendecagon have?
- 17 With which sport does one associate Sarina Wiegman?
- 18 In the 1932 film Grand Hotel which actress wanted to be alone ?
- 19 Cassandra was who's wife in Only Fools and Horses?
- 20 According to the 2022 Good Beer Guide, which English County has the most breweries ?

PUBLIC TRANSPORT INFORMATION

Some useful contact details for Tyne & Wear Metro and local bus services.

Arriva - 0344 800 44 11	www.arrivabus.co.uk/north-east/
Go North East - 0191 420 5050	https://www.gonorth-east.co.uk/services
Nexus (Metro & Buses) - 0191 2020747	www.nexus.org.uk/
Stagecoach - 0191 566 0231	www.stagecoachbus.com/about/north-east
Traveline North East - 0871 2002233	www.travelinenorth-east.info

TRADING STANDARDS

If you have any complaint about your beer or cider, such as poor quality, short measures or no price list displayed, you should mention it to the pub management in the first instance. If you need to pursue the complaint further, we recommend contacting the local Trading Standards Office. Contact details are given below :-

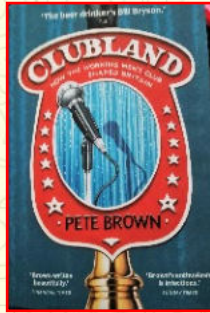
SOUTH TYNESIDE	https://www.southtyneside.gov.uk/article/68067/Make-a-complaint
SUNDERLAND	Citizens Advice consumer helpline: 0808 223 1133

BOOK REVIEW :- Clubland by Pete Brown (Harper North)

Pete Brown is a beer writer from Barnsley, whose previous titles include *Man Walks into a Pub* and *Hops and Glory*. *The Times Literary Supplement* has described him as the beer lovers' Bill Bryson.

His latest work tells the story of the Clubs and Institute Union (CIU) from its formation in London in 1863. Like many things in Victorian Britain, the driving force behind the movement was a middle class busy body, who thought he knew what working men wanted. Original clubs did not sell intoxicants and aimed to lift the urban poor out of their squalor

By the 1870's, this had changed and beer was allowed and the club environment had a positive impact on alcohol consumption with this being lower than in pubs. The author charts the development of the CIU through its 150 year history and he describes the obstacles they had to overcome; hostility and opposition from the ruling classes, brewers who owned pubs and the



Church.

He tells how club entertainment is a direct descendent of the music hall, charts other issues the movement had to surmount. Not all have been a success, including women in clubs, games and gambling, the decline of heavy industry in the heart of Clubland and changes in how people spend their leisure time and money. At the height of the club movement, there were around 4,000 affiliated clubs. The number has declined to around 1,500.

As he tells the story, he uses case studies on a diverse range of clubs, their development and, in some cases, their decline. He features Newcastle Labour Club as his North East case

study. He concludes with what clubs are doing to ensure they survive and continue to be relevant.

This is an informative, social history of British working class culture, and the writer shows a personal connection and affinity with the subject.

After enjoying *Clubland*, I am keen to read Pete Brown's other beery titles. I bought my copy from Waterstones in Sunderland for £15, £5 off the cover price. It is also advertised on Amazon.

Just after I started to read this book, BBC1 aired a programme called *The Real Phoenix Nights* from the *We Are England* series. This half hour programme told of the trials and tribulation of Clacton Railway Workers Club as it reopened after the end of lockdown. It highlights many of the issues Pete Brown raises, and this story appears to have a happy end.

It is available on BBC iPlayer until January.

Michael Wynne

From the papers

The *Glasgow Evening Times* reported in July that a care home for dementia sufferers in Giffnock had opened a pub for their residents. Called the **Staying Inn**, the venture allows residents to socialise, have a drink or order snacks. The home told *the Times* that they have noticed the positive effect this had had on some of the residents. What an excellent idea.

Michael Wynne

Branch Contact Information

General Contact		contact@sst.camra.org.uk
Chairman	Ian Monteith Preston	chair@sst.camra.org.uk
Secretary	Lynn Dobson	secretary@sst.camra.org.uk
Treasurer	Steve Drummond	treasurer@sst.camra.org.uk
Membership	Peter Tong	members@sst.camra.org.uk
Magazine Editor	Ken Paul	magazine01@sst.camra.org.uk
Advertising	Peter Tong	ad01@sst.camra.org.uk
Webmaster	Ian Monteith-Preston	webmin@sst.camra.org.uk
Social Media	Stan Johnson	Socialmedia@sst.camra.org.uk
Public Affairs	Michael Wynne	publicaffairs@sst.camra.org.uk)
Pubs & Clubs	Ken Paul	pubsofficer@sst.camra.org.uk
Pubs Protection	Ian Monteith Preston	ppo@sst.camra.org.uk
Cider Rep.	Steve Clough	cider@sst.camra.org.uk
Social Secretary	Robin Sanderson	social@sst.camra.org.uk
Brewery Liaison Officers		
Darwin/ Brewlab BLO	Michael Wynne	darwinBLO@sst.camra.org.uk
Maxim BLO	Ken Paul	maximBLO@sst.camra.org.uk
Vaux BLO	Mo Moseley	vauxBLO@sst.camra.org.uk

BRANCH SOCIAL MEDIA DETAILS	PRESS & MEDIA CONTACTS
<p>Twitter: @SST_CAMRA</p> <p>Facebook: https://www.facebook.com/SSTCAMRA</p> <p>Facebook: https://www.facebook.com/groups/SSTCAMRA/ (Discussion Group)</p> <p>Instagram: https://instagram.com/sst_camra</p>	<p>Michael Wynne Ian Monteith-Preston Stan Johnson Ken Paul press@sst.camra.org.uk</p> <p>For more details see https://sst.camra.org.uk/wordpress/?page_id=32</p>

QUIZ ANSWERS

1	Greg Norman	11	Cambodia
2	Rio De Janeiro	12	Sex and the City
3	Open All Hours	13	Antonines Wall
4	Glen Campbell	14	Live and Let Die
5	Postman Pat	15	William Tell Overture
6	Mark Rylance	16	Eleven
7	Paul Simon	17	England Women's Euros Coach
8	Texas	18	Greta Garbo
9	Japan	19	Rodney Trotter's
10	Star Trek	20	West Yorkshire



10 great reasons to join CAMRA

1 CAMPAIGN
for great beer, cider and perry

2 Become a
BEER EXPERT

3 Enjoy CAMRA
BEER FESTIVALS
in front of or behind the bar

4 GET INVOLVED
and make new friends

5 Save
YOUR LOCAL

6 Find the
**BEST PUBS
IN BRITAIN**

Get great
**7 VALUE FOR
MONEY**

8 DISCOVER
pub heritage and the
great outdoors

Enjoy great
9 HEALTH BENEFITS
(really!)

10 HAVE YOUR SAY

What's yours?

Discover your reason
and join the campaign today:
www.camra.org.uk/10reasons



Campaign
for
Real Ale